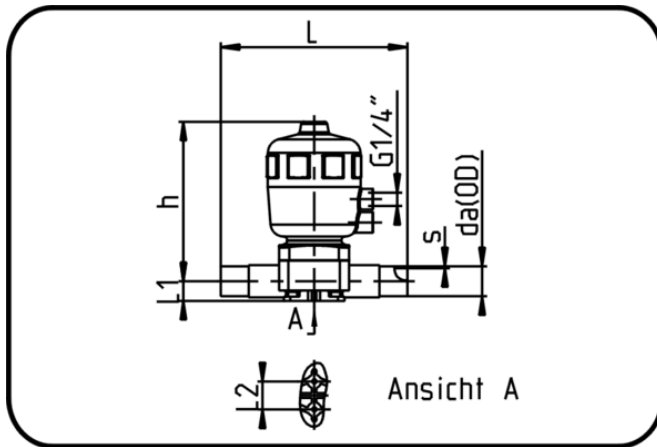


## Valves



Code: 341.1

- **Diaphragm Valve Pneumatic**

- opened by resilience
- EPDM/PTFE diaphragm

- **Butt+IR+HPF-welding**

- **PVDF UHP natural**

Dimension	Code	Detail	da(OD) mm	s mm	L mm	L1 mm	L2 mm	h mm	Weight
20	35.341.1020.21	20 - SDR21 MOP 10 bar	20	1,9	133	16,5	24,5	170	1
25	35.341.1025.21	25 - SDR21 MOP 10 bar	25	1,9	144	16,5	24,5	170	1
32	35.341.1032.21	32 - SDR21 MOP 10 bar	32	2,4	154	20,5	24,5	175	1.5
40	35.341.1040.21	40 - SDR21 MOP 10 bar	40	2,4	193	25,5	44	273	4.04
50	35.341.1050.21	50 - SDR21 MOP 10 bar	50	3	194	32	44	273	4.21
63	35.341.1063.21	63 - SDR21 MOP 10 bar	63	3	224	38,5	44	277	4.57