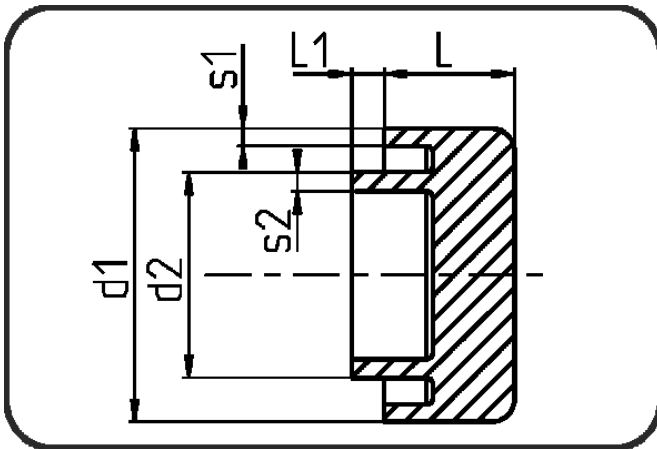


PPR Poly-Flo



Code: 193

- Poly-Flo End Cap
- machined
- simultaneous + cascade welding
- PPR grey

Dimension	Code	Detail	s1 mm	s2 mm	d1 mm	d2 mm	L mm	L1 mm	Weight
50/32	11.193.5032.71	50/32 SDR17/11	3	3	50	32	30	10	0.041
90/63	11.193.9063.71	90/63 SDR17/11	5,4	5,8	90	63	40	10	0.25
160/110	11.193.1611.71	160/110 SDR17/11	9,5	10	160	110	50	10	1.01