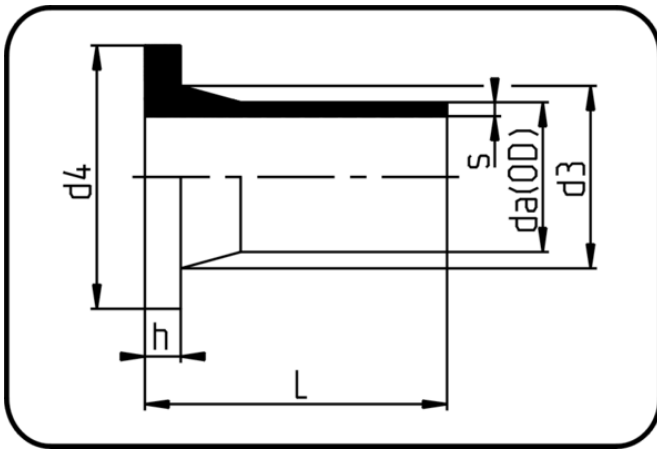


Elongated Fittings



Code: 062

- **Stub Flange DIN**
- long spigot
- injection moulded
- **Butt+E-socket-welding**
- **PPR grey**

Backing Rings please see Accessories.

Dimension	Code	Detail	da(OD) mm	s mm	L mm	d3 mm	d4 mm	h mm	Weight
20	11.062.0020.11	20X1,9 SDR11 ISO S-5	20	1,9	88	27	45	7	0.02
25	11.062.0025.11	25X2,3 SDR11 ISO S-5	25	2,3	88	33	58	9	0.035
32	11.062.0032.11	32X2,9 SDR11 ISO S-5	32	2,9	89	40	68	10	0.054
40	11.062.0040.11	40X3,7 SDR11 ISO S-5	40	3,7	102	50	78	11	0.083
50	11.062.0050.11	50X4,6 SDR11 ISO S-5	50	4,6	102	61	88	12	0.118
63	11.062.0063.11	63X5,8 SDR11 ISO S-5	63	5,8	124	75	102	14	0.21
75	11.062.0075.11	75X6,8 SDR11 ISO S-5	75	6,8	126	89	122	16	0.295
90	11.062.0090.11	90X8,2 SDR11 ISO S-5	90	8,2	143	105	138	17	0.438
110	11.062.0110.11	110X10,0 SDR11 ISO S-5	110	10	162	125	158	18	0.705
125	11.062.0125.11	125X11,4 SDR11 ISO S-5	125	11,4	173	132	158	25	0.841
140	11.062.0140.11	140X12,7 SDR11 ISO S-5	140	12,7	193	155	188	25	1.24
160	11.062.0160.11	160X14,6 SDR11 ISO S-5	160	14,6	203	175	212	25	1.68
180	11.062.0180.11	180X16,4 SDR11 ISO S-5	180	16,4	213	183	212	30	1.94
200	11.062.0200.11	200X18,2 SDR11 ISO S-5	200	18,2	213	232	268	32	3.08
225	11.062.0225.11	225X20,5 SDR11 ISO S-5	225	20,5	213	235	268	32	3.18
250	11.062.0250.11	250X22,7 SDR11 ISO S-5	250	22,7	210	285	320	35	4.5
280	11.062.0280.11	280X25,4 SDR11 ISO S-5	280	25,4	220	288	320	35	5
315	11.062.0315.11	315X28,6 SDR11 ISO S-5	315	28,6	238	335	370	35	7.2