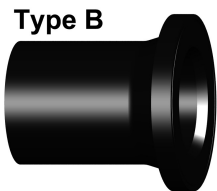
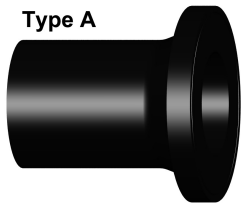


Specificatieblad

valid from: 19-11-19

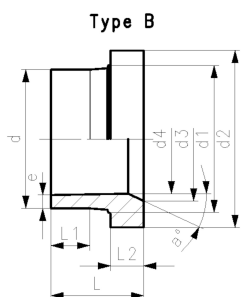
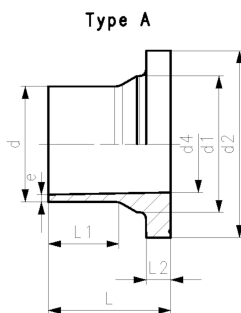


ecoFIT voorlaskraag, PE100, SDR17/17,6 gecombineerd dichtvlak: vlak en gegroefd

uitvoering:

- lang spie-eind
- materiaal: PE100
- voor IR-, stomp- en elektrolassen
- past op metrische flenzen (vanaf d110 ook voor ANSI B 16.5)
- afdichting d20-d630: profielflensafdichting NBR nr. 45 44 07, EPDM nr. 48 44 07
- afdichting d710-d1000: vlakke pakking EPDM nr. 48 40 03
- type A zonder aanschuining; type B met aanschuining
- 5 bar gas / 10 bar water
- tot d400 geschikt voor vlinderkleppen type 567/578 gebruik daarboven een PE ecoFIT voorlaskraag voor vlinderkleppen SDR17,6 (d450-d1200)

** installatieondersteuning door gegoten ribbels



| d (mm) | DN (mm) | FM | Code | gewicht (kg) | PF |
|-----------|------------|------|-------------|-----------------|--------------|
| 50 | 40 | IR | 753 800 085 | 0,107 | 2 51 301 001 |
| 63 | 50 | IR | 753 800 086 | 0,168 | 2 51 301 001 |
| 75 | 65 | IR | 753 800 087 | 0,260 | 2 51 301 001 |
| 90 | 80 | IR | 753 800 088 | 0,367 | 2 51 301 001 |
| 110 | 100 | IR | 753 800 089 | 0,571 | 2 51 301 001 |
| 125 | 100 | IR | 753 800 090 | 0,684 | 2 51 301 001 |
| 140 | 125 | IR | 753 800 091 | 1,035 | 2 51 301 001 |
| 160 | 150 | IR | 753 800 092 | 1,342 | 2 51 301 001 |
| 180 | 150 | IR | 753 800 093 | 1,469 | 2 51 301 001 |
| 200 | 200 | IR | 753 800 094 | 2,297 | 2 51 301 001 |
| 225 | 200 | IR | 753 800 095 | 2,456 | 2 51 301 001 |
| 250 | 250 | | 753 800 096 | 3,500 | 2 51 301 002 |
| 280 | 250 | | 753 800 097 | 3,780 | 2 51 301 002 |
| 315 | 300 | | 753 800 098 | 5,470 | 2 51 301 002 |
| * | 355 | 350 | 753 800 299 | 7,100 | 2 51 301 008 |
| * | 400 | 400 | 753 800 300 | 9,600 | 2 51 301 008 |
| * | 450 | 500 | 753 800 301 | 16,400 | 2 51 301 008 |
| * | 500 | 500 | 753 800 302 | 18,500 | 2 51 301 008 |
| | 560 | 600 | 753 800 303 | 26,940 | 2 51 301 008 |
| | 630 | 600 | 753 800 304 | 44,260 | 2 51 301 008 |
| | 710 | 700 | 753 800 105 | 39,376 | 2 51 301 008 |
| | 800 | 800 | 753 800 106 | 50,759 | 2 51 301 008 |
| | 900 | 900 | 753 800 107 | 64,202 | 2 51 301 008 |
| | 1000 | 1000 | 753 800 108 | 79,495 | 2 51 301 008 |

| d (mm) | d1 (mm) | d2 (mm) | d3 (mm) | d4 (mm) | L (mm) | L1 (mm) | L2 (mm) | e (mm) | type | a° |
|-----------|------------|------------|------------|------------|-----------|------------|------------|-----------|------|----|
| 50 | 61 | 88 | | 44 | 90 | 62 | 12 | 3,0 | A | |
| 63 | 75 | 102 | | 55 | 106 | 70 | 14 | 3,8 | A | |
| 75 | 89 | 122 | | 66 | 130 | 75 | 16 | 4,5 | A | |
| 90 | 105 | 138 | | 79 | 140 | 103 | 17 | 5,4 | A | |
| 110 | 125 | 158 | | 96 | 160 | 117 | 18 | 6,6 | A | |
| 125 | 132 | 158 | 114 | 110 | 170 | 125 | 25 | 7,4 | B | 30 |
| 140 | 155 | 188 | 127 | 123 | 200 | 147 | 25 | 8,3 | B | 30 |
| 160 | 175 | 212 | 151 | 141 | 200 | 147 | 25 | 9,5 | B | 30 |
| 180 | 180 | 212 | | 158 | 200 | 170 | 30 | 10,7 | A | |
| 200 | 232 | 268 | 203 | 176 | 200 | 128 | 32 | 11,9 | B | 30 |
| 225 | 235 | 268 | 210 | 198 | 200 | 138 | 32 | 13,4 | B | 30 |
| 250 | 285 | 320 | 245 | 220 | 220 | 148 | 35 | 14,8 | B | 25 |
| 280 | 291 | 320 | 265 | 246 | 230 | 154 | 35 | 16,6 | B | 30 |
| 315 | 335 | 370 | 300 | 277 | 242 | 166 | 36 | 18,7 | B | 30 |
| * | 355 | 373 | 430 | 346 | 310 | 260 | 33 | 21,1 | B | 21 |
| * | 400 | 427 | 482 | 395 | 350 | 282 | 36 | 23,7 | B | 21 |
| * | 450 | 514 | 585 | 400 | 316 | 205 | 46 | 26,7 | A | |

Specificatieblad

valid from: 19-11-19



| | d | d1 | d2 | d3 | d4 | L | L1 | L2 | e | type | a° |
|---|------|------|------|------|------|------|------|------|------|------|----|
| | (mm) | (mm) | (mm) | (mm) | (mm) | (mm) | (mm) | (mm) | (mm) | | |
| * | 500 | 530 | 585 | | 400 | 337 | 220 | 46 | 29,7 | A | |
| | 560 | 616 | 685 | | 493 | 370 | 250 | 50 | 33,2 | A | |
| | 630 | 644 | 685 | | 555 | 390 | 270 | 50 | 37,4 | A | |
| | 710 | 737 | 800 | | 626 | 400 | 280 | 50 | 42,1 | A | |
| | 800 | 840 | 905 | | 705 | 400 | 280 | 52 | 47,4 | A | |
| | 900 | 944 | 1005 | | 793 | 400 | 260 | 55 | 53,3 | A | |
| | 1000 | 1047 | 1110 | | 881 | 400 | 260 | 60 | 59,3 | A | |

De technische gegevens zijn niet bindend en houden geen garanties in van eigenschappen. Wijzigingen voorbehouden. Onze algemene verkoopvoorwaarden zijn van toepassing.

Georg Fischer Piping Systems Ltd, Postfach, CH-8201 Schaffhausen/Switzerland

Phone +41 -(0)52-631 1111

e-mail: info.ps@georgfischer.com

Internet: <http://www.gfps.com>