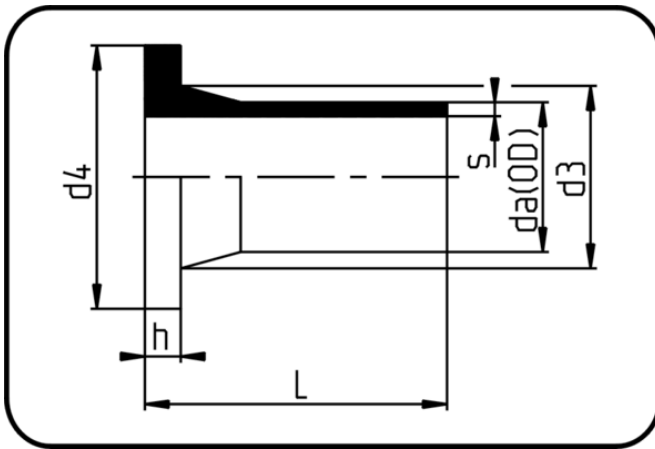


Elongated Fittings



Code: 062

- **Stub Flange DIN**
- long spigot
- injection moulded
- **Butt+E-socket-welding**
- **PE 100 black**

Backing Rings please see Accessories.

Dimension	Code	Detail	da(OD) mm	s mm	L mm	d3 mm	d4 mm	h mm	Weight
63	25.062.0063.11	63X5,8 SDR11 ISO S-5	63	5,8	122	75	102	14	0.217
75	25.062.0075.11	75X6,8 SDR11 ISO S-5	75	6,8	125	89	122	16	0.312
90	25.062.0090.11	90X8,2 SDR11 ISO S-5	90	8,2	140	105	138	17	0.454
110	25.062.0110.11	110X10,0 SDR11 ISO S-5	110	10	159	125	158	18	0.729
125	25.062.0125.11	125X11,4 SDR11 ISO S-5	125	11,4	169	132	158	25	0.885
140	25.062.0140.11	140X12,7 SDR11 ISO S-5	140	12,7	188	155	188	25	1.296
160	25.062.0160.11	160X14,6 SDR11 ISO S-5	160	14,6	200	175	212	25	1.76
180	25.062.0180.11	180X16,4 SDR11 ISO S-5	180	16,4	209	183	212	30	2.04
200	25.062.0200.11	200X18,2 SDR11 ISO S-5	200	18,2	210	232	268	32	3.22
225	25.062.0225.11	225X20,5 SDR11 ISO S-5	225	20,5	210	235	268	32	3.32
250	25.062.0250.11	250X22,7 SDR11 ISO S-5	250	22,7	204	285	320	35	4.7
280	25.062.0280.11	280X25,4 SDR11 ISO S-5	280	25,4	218	288	320	35	5.2
315	25.062.0315.11	315X28,6 SDR11 ISO S-5	315	28,6	238	335	370	35	7.58
355	25.062.0355.11	355X32,2 SDR11 ISO S-5	355	32,2	257	373	430	40	10.64
400	25.062.0400.11	400X36,3 SDR11 ISO S-5	400	36,3	274	427	482	46	14.42