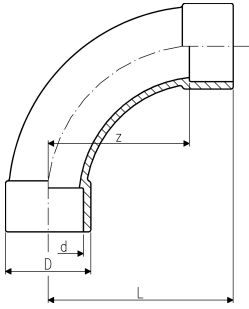


## bocht 90°, ABS metrisch

- radius = 2 d
- \* leverbaar zolang de voorraad strekt



$r = 2d$



d (mm)	PN (bar)	code	SP	gewicht (kg)	D (mm)	L (mm)	z (mm)	inch bena- dering (inch)
20	16	<b>729 000 106</b>	10	0,027	27	58	40	½
25	16	<b>729 000 107</b>	10	0,039	35	69	50	¾
32	10	<b>729 000 108</b>	10	0,056	38	86	64	1
40	10	<b>729 000 109</b>	30	0,099	54	109	80	1 ¼
50	10	<b>729 000 110</b>	10	0,229	61	131	100	1 ½
63	10	<b>729 000 111</b>	4	0,391	76	164	126	2
75	10	<b>729 000 112</b>	5	0,595	90	194	150	2 ½
90	10	<b>729 000 113</b>	5	1,044	113	231	180	3
110	10	<b>729 000 114</b>	5	2,101	137	281	220	4
140	10	<b>729 000 116</b>	1	3,996	168	356	280	5
* 160	10	<b>729 000 117</b>	1	5,600	191	406	320	6

The technical data are not binding. They neither constitute expressly warranted characteristics nor guaranteed properties nor a guaranteed durability. They are subject to modification. Our General Terms of Sale apply.

Georg Fischer Piping Systems Ltd, Postfach, CH-8201 Schaffhausen/Switzerland

Phone +41 -(0)52-631 1111

e-mail: [info.ps@georgfischer.com](mailto:info.ps@georgfischer.com)

Internet: <http://www.gfps.com>