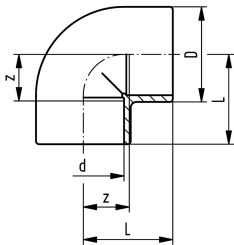




knie 90°, SYGEF® Standaard, PVDF, PN16

uitvoering:

- materiaal: PVDF



| d | PN | code | gewicht | D | L | z |
|------|-------|--------------------|---------|------|------|------|
| (mm) | (bar) | | (kg) | (mm) | (mm) | (mm) |
| 16 | 16 | 735 100 105 | 0,030 | 26 | 25 | 12 |
| 20 | 16 | 735 100 106 | 0,026 | 27 | 28 | 14 |
| 25 | 16 | 735 100 107 | 0,039 | 32 | 32 | 16 |
| 32 | 16 | 735 100 108 | 0,066 | 40 | 38 | 20 |
| 40 | 16 | 735 100 109 | 0,103 | 49 | 44 | 24 |
| 50 | 16 | 735 100 110 | 0,164 | 60 | 51 | 28 |
| 63 | 16 | 735 100 111 | 0,287 | 75 | 62 | 35 |

The technical data are not binding. They neither constitute expressly warranted characteristics nor guaranteed properties nor a guaranteed durability. They are subject to modification. Our General Terms of Sale apply.

Georg Fischer Piping Systems Ltd, Postfach, CH-8201 Schaffhausen/Switzerland

Phone +41 -(0)52-631 1111

e-mail: info.ps@georgfischer.com

Internet: <http://www.gfps.com>